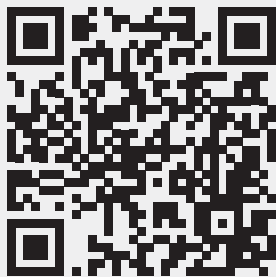


Engelmann Repeater

Repeater

Signal amplifier for wireless M-Bus devices



Signal amplifier for bridging long radio links

Can be used immediately in conjunction with the Engelmann factory setting

Automatic device detection

Installation mode for easy commissioning

Battery operation for location-independent installation

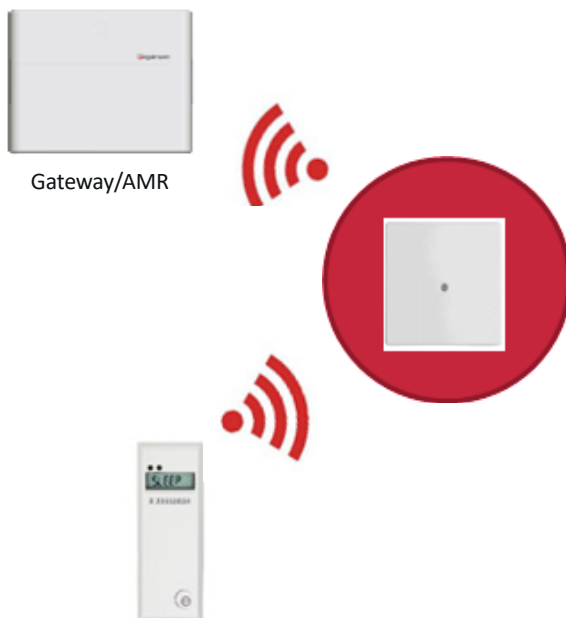
Overview

REPEATER



A repeater is used to support a gateway in collecting device data. If the device signal is weak or absent, the repeater acts as a signal amplifier for the gateway.

The repeater is supplied as a single-hop version and can be used immediately in conjunction with the Engelmann factory settings. This means you can simply install the repeater and get started straight away – no complicated settings are required. For multi-hop operation (max. 4 hops) or to change the Engelmann settings, we also offer a dongle with corresponding software.



Features

- Automatic meter installation
- Radio operation wireless M-Bus (OMS)
- Single-Hop
- Max. 932 devices can be received
- Installation mode: 60 minutes
- Battery life approx. 10 years (with the Engelmann settings)
- Casing cover protected with security screw TORX T20H + pin

Repeater

TECHNICAL DATA



Casing

Repeater casing (H x W x D)	mm	150 x 150 x 53
Protection class		IP40
Material		UL 94 HB; flame-retardant, UV resistant PC/ABS

General

Voltage	V	3.6 DC; lithium battery (lifetime approx. 10 years with Engelmann default settings)
Ambient temperature	°C	operation: 0 ... 50; storage: -10 ... +55
Antenna		2 internal antennas
Conformity		2014/53/EU, 2011/65/EU, EN 301489, EN 62368-1, EN 61000-6-1
Hop version (max. 4 Hops)		Single-Hop (factory setting) Multi-Hop (dongle required for configuration)

Radio characteristics

Radio operation		OMS (Open Metering System)
Radio chipset		to wireless M-Bus (wM-Bus) M-Bus RF [EN 13757-3/4]
Frequency	MHz	T-, C-mode: 868.95; S-mode: 868.3 (additional software is required for operation)
Receive mode		T/C combined (factory setting)
Transmit mode		C (factory setting) or selectable: T
Output power		maximum +14 dBm
Sensitivity		up to -105 dBm
Received devices		max. 932

Control elements

Magnetic switch		activation: installation, configuration mode
Dongle (optional, art. no. 0500000079)		required for configuration
Engelmann-Default-Settings		Single-Hop receive mode: T/C (simultaneous) transmit mode: C listen time: 25 min / Mon. - Sun. start time: 08:00 AM UTC (corresponds to winter time 09:00 AM) magnetic timer: 60 minutes automatic meter installation battery connected clock activated

Contact us here:



+49 6222 98 00 188 (Orders)
+49 6222 98 00 2727 (Technical Service)
+49 6222 98 00 0 (Head Office)



info@engelmann.de



Engelmann Sensor GmbH
Rudolf-Diesel-Straße 24-28
69168 Wiesloch-Baiertal
Germany



www.engelmann.de